



AgMR

SILVER MOUNTAIN RESOURCES

CORPORATE PRESENTATION

January 2023
www.agmr.ca
TSXV:AGMR
OTCQB:AGMRF
BVL:AGMR

Disclaimer

IMPORTANT – YOU MUST READ THE FOLLOWING BEFORE CONTINUING:

The information contained in this document has been prepared by Silver Mountain Resources Inc. (the “Company”) and contains confidential information pertaining to the business, operations and assets of the Company. The information contained in this document (a) is provided as at the date hereof and is subject to change without notice, (b) does not purport to contain all the information that may be necessary or desirable to fully and accurately evaluate an investment in the Company, and (c) is not to be considered as a recommendation by the Company that any person make an investment in the Company. An investment in the securities described herein is speculative and involves a number of risks that should be considered by a prospective investor. This document is confidential and is being provided to you solely for your information and may not be reproduced, in whole or in part, in any form or forwarded or further distributed to any other person. Any forwarding, distribution or reproduction of this document in whole or in part is unauthorized. This presentation is not, and under no circumstances is to be construed as, a prospectus, or advertisement or a public offering of securities of the Company. Prospective investors should not assume that this document is complete and should conduct their own analysis and investigation of the Company and consult with their own financial, legal, tax and other business advisors, having regard to their own particular circumstances, before investing in the Company. By accepting and reviewing this document, you acknowledge and agree to not utilize any of the information contained herein except to assist with your evaluation of the Company. This document may have been sent to you in an electronic form. You are reminded that documents transmitted via this medium may be altered or changed during the process of electronic transmission. You are responsible for protecting against viruses and other destructive items. Your receipt of this electronic transmission is at your own risk and it is your responsibility to take precautions to ensure that it is free from viruses and other items of

a destructive nature. As a consequence of the above, neither the Company nor any director, officer, employee or agent of any of them or any affiliate of any such person accepts any liability or responsibility whatsoever in respect of any difference between the document distributed to you in electronic format and the hard copy version that may be made available to you. The information presented herein was prepared or obtained by the Company. Nothing contained herein is, or should be relied on as, a promise or representation as to the future performance of the Company.

In making an investment decision, investors must rely on their own examination of the Company and the terms of any investment, including the merits and risks involved. The securities of the Company have not been approved or disapproved by any securities commission, exchange or similar regulatory authority in Canada or elsewhere, nor have any of the foregoing authorities reviewed or in any passed upon the merits, accuracy or adequacy of this presentation. Any representation to the contrary is an offence.

In this presentation, all amounts are in Canadian dollars, unless otherwise indicated. Unless otherwise indicated or the context otherwise requires, all references in this presentation to “AGMR”, the “Company,” “we,” “our,” “ours,” “us” or similar terms refer to Silver Mountain Resources Inc., together with its wholly-owned subsidiaries. Any graphs, tables or other information in this presentation demonstrating the historical performance of AGMR or of any other entity contained in this presentation are intended only to illustrate past performance and are not necessarily indicative of future performance of AGMR or such other entities.

This presentation has been reviewed and approved by Jose Vizquerra, a director of the Company and a “Qualified Person” within the meaning of National Instrument 43-101 – Standards of Disclosure for Mineral Projects.

HISTORICAL RESOURCE ESTIMATES: This presentation includes a historical resource estimate in respect of the Company’s Castrovirreyna Project as set out in the Company’s technical report entitled “National Instrument 43-101 Technical Report - Castrovirreyna Project, Peru” dated October 6, 2021 and amended November 18, 2021 with an effective date of August 17, 2021 and available on the Company’s profile on www.sedar.com. (i) Historical resource estimates have been classified in accordance with the CIM Definition Standards; (ii) Historical resource estimates are not Mineral Reserves or Mineral Resources and do not have demonstrated economic viability. All figures are rounded to reflect the relative accuracy of the estimates; (iii) Information is as of July, 2019 Source: Sociedad Minera Reliquias SA, the information is based on RM-Master Pro Quality, C. Rodriguez, Abr19; RM-Master Pro Quality, C. Rodriguez, Jul19; (iv) the Qualified Person considers that the historical resource estimates are relevant for the proper understanding of the Castrovirreyna Project and additional exploration, including drilling, could be needed to verify the historical estimate as current Mineral Resources; (v) A qualified person has not done sufficient work to classify the historical estimate as current Mineral Resources or Mineral Reserves; and (vi) The Company is not treating the historical estimate as current Mineral Resources or Mineral Reserves.

Disclaimer

CAUTIONARY NOTE REGARDING FORWARD-LOOKING INFORMATION AND FORWARD-LOOKING STATEMENTS:

Certain statements in this presentation constitute forward-looking statements and forward looking information within the meaning of applicable Canadian and United States securities legislation (collectively herein referred to as “forward-looking statements”), which can often be identified by words such as “will”, “may”, “estimate”, “expect”, “plan”, “project”, “intend”, “anticipate” and other words indicating that the statements are forward-looking. Such forward-looking statements are expectations only and are subject to known and unknown risks, uncertainties and other important factors that could cause the actual results, performance or achievements of the Company or industry results to differ materially from any future results, performance or achievements implied by such forward-looking statements. Such risks and uncertainties include, among others, regulatory risks, risks related to the COVID-19 global pandemic, changes in laws, resolutions and guidelines, market risks, concentration risks, operating history, competition, the risks associated with international and foreign operations and the other risks identified under the heading “Risk Factors” in the Company’s final prospectus dated January 26, 2022 and available on the Company’s profile on www.sedar.com.

These factors should be considered carefully and readers are cautioned not to place undue reliance on such forward-looking statements. Forward-looking statements are necessarily based upon a number of estimates and assumptions that, while considered reasonable by management of the Company at this time, are inherently subject to significant business, economic and competitive risks, uncertainties and contingencies that could cause actual results to differ materially from those expressed or implied in such statements.

These risks, uncertainties and assumptions could adversely affect the outcome and financial effects of the plans and events described herein. In addition, even if the outcome and financial effects of the plans and events described herein are consistent with the forward-looking statements contained in this presentation, those results or developments may not be indicative of results or developments in subsequent periods. Although the Company has attempted to identify important risks and factors that could cause actual actions, events or

results to differ materially from those described in forward-looking statements, there may be other factors and risks that cause actions, events or results not to be as anticipated, estimated or intended. Forward-looking information contained in this presentation is based on the Company’s current estimates, expectations and projections, which are based on the information available as of the date of this document. Prospective investors should not place undue reliance on any forward-looking statement contained in this presentation. Forward-looking statements contained in this document are made of the date of this presentation and, except as required by applicable law, the Company assumes no obligation to update or revise them to reflect new events or circumstances. Historical statements contained in this document regarding past trends or activities should not be taken as a representation that such trends or activities will continue in the future. In this regard, certain financial information contained herein has been extracted from, or based upon, information available in the public domain and/or provided by the Company. No statement in this document is intended to be nor may be construed as a profit forecast.

An investment in the Company is speculative and involves substantial risk and is only suitable for investors that understand the potential consequences and are able to bear the risk of losing their entire investment. Investors should consider the above noted risks, in addition to many others, and consult with their own legal, tax and financial advisors with respect to all such risks before making an investment.

THIRD PARTY INFORMATION: This presentation includes market and industry data which was obtained from various publicly available sources and other sources believed by the Company to be true. Although the Company believes it to be reliable, the Company has not independently verified any of the data from third-party sources referred to in this presentation, or analyzed or verified the underlying reports relied upon or referred to by such sources, or ascertained the underlying assumptions relied upon by such sources. The Company does not make any representation as to the accuracy of such information.

TAXATION: Prospective investors should be aware that the purchase of securities of the Company or any entity related thereto may have tax

consequences. The Company assumes no responsibility for the tax consequences of any investment. Each prospective investor is strongly encouraged to consult its own tax advisor concerning any purchase of securities of the Company or any entity related thereto.

CAUTIONARY NOTE TO UNITED STATES INVESTORS: This presentation does not constitute an offer to sell or the solicitation of an offer to buy, nor shall there be any sale of the securities of the Company in any jurisdiction in which such offer, solicitation or sale would be unlawful. The securities of the Company described herein have not been and will not be registered under the United States federal or state securities laws and may not be offered or sold in the United States, or to, or for the account or benefit of, “U.S. Persons” as such term is defined in Regulation S under the United States Securities Act of 1933, as amended, unless an exemption from registration is available.

Who is AgMR? | Highlights

- Fast-tracked & low capex production re-start
- Well financed silver developer
- Debt free company
- 100% owned asset in the historic mining district of Castrovirreyna
- Proven mining track record of management team and board
- High potential for new gold discoveries
- 2,000tpd concentrator plant & tailings dam capacity



NI 43-101 Historical Estimate

Resource	Volume	Grades				Contained Metal			
		Silver	Zinc	Lead	Copper	Silver	Zinc	Lead	Copper
	Kt	g/t	%	%	%	Moz Ag	Mlb Zn	Mlb Pb	Mlb Cu
Measured	337	264	3.6%	2.7%	0.6%	2.9	26.4	19.9	4.2
Indicated	401	301	3.4%	2.2%	0.5%	3.9	30.2	19.8	4.6
M & I	737	284	3.5%	2.4%	0.5%	6.7	56.6	39.7	8.8
Inferred	2,286	416	3.1%	2.7%	1.7%	30.6	153.9	137.0	84.9

(i) Historical resource estimates have been classified in accordance with the CIM Definition Standards; (ii) Historical resource estimates are not Mineral Reserves or Mineral Resources and do not have demonstrated economic viability. All figures are rounded to reflect the relative accuracy of the estimates; (iii) Information is as of July, 2019 Source: Sociedad Minera Reliquias, the information is based on RM-Master Pro Quality, C. Rodriguez, Apr19; RM-Master Pro Quality, C. Rodriguez, Jul19; (iv) The Qualified Person considers that the historical resource estimates are relevant for the proper understanding of the Castrovirreyna Project and additional exploration, including drilling, could be needed to verify the historical estimate as current Mineral Resources; (v) A qualified person has not done sufficient work to classify the historical estimate as current Mineral Resources or Mineral Reserves; and (vi) The Company is not treating the historical estimate as current Mineral Resources or Mineral Reserves.

Technical Overview

EXPLORATION UPSIDE

Dorita and Huancarpusca Targets

- Large intermediate-/ high-sulfidation epithermal targets with Ag, Au and polymetallic concentrations in silicified-oxidized structures
- Potential for conventional low-cost open pit mining / Heap Leach operation & low stripping

Poetas and Carmela Targets

- Large high sulfidation epithermal alteration footprint with high Ag/Au ratios, sheeted veining outcrops
- Bulk-tonnage potential. Close to processing plant with good road access (4 km)

Yahuarcocha Targets

- Local breccia-veining mineralization with high Ag-Au credits & base metal concentrations
- Geological potential for both open-cut and high-grade underground mining, located 10km from processing plant

ADVANCED BROWNFIELD

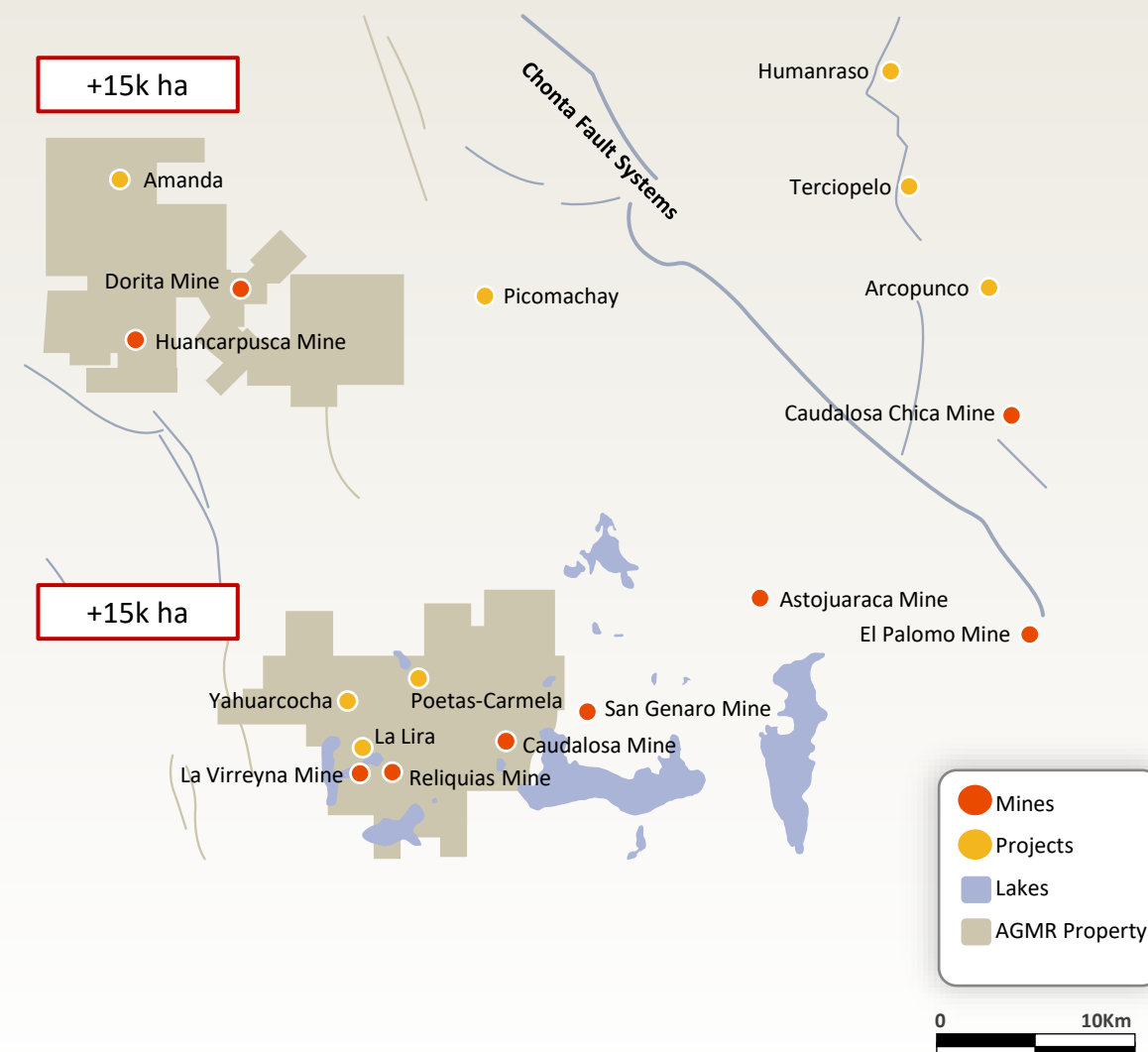
Reliquias UG and Reliquias Alta OP

- Continuity at depth of main Matacaballo, Sacasipuedes veins & other structures
- Mine in good condition with historical capacity to produce 3.4 Moz Ag with Zn, Pb, Cu & Au in concentrates during first 2.5 years

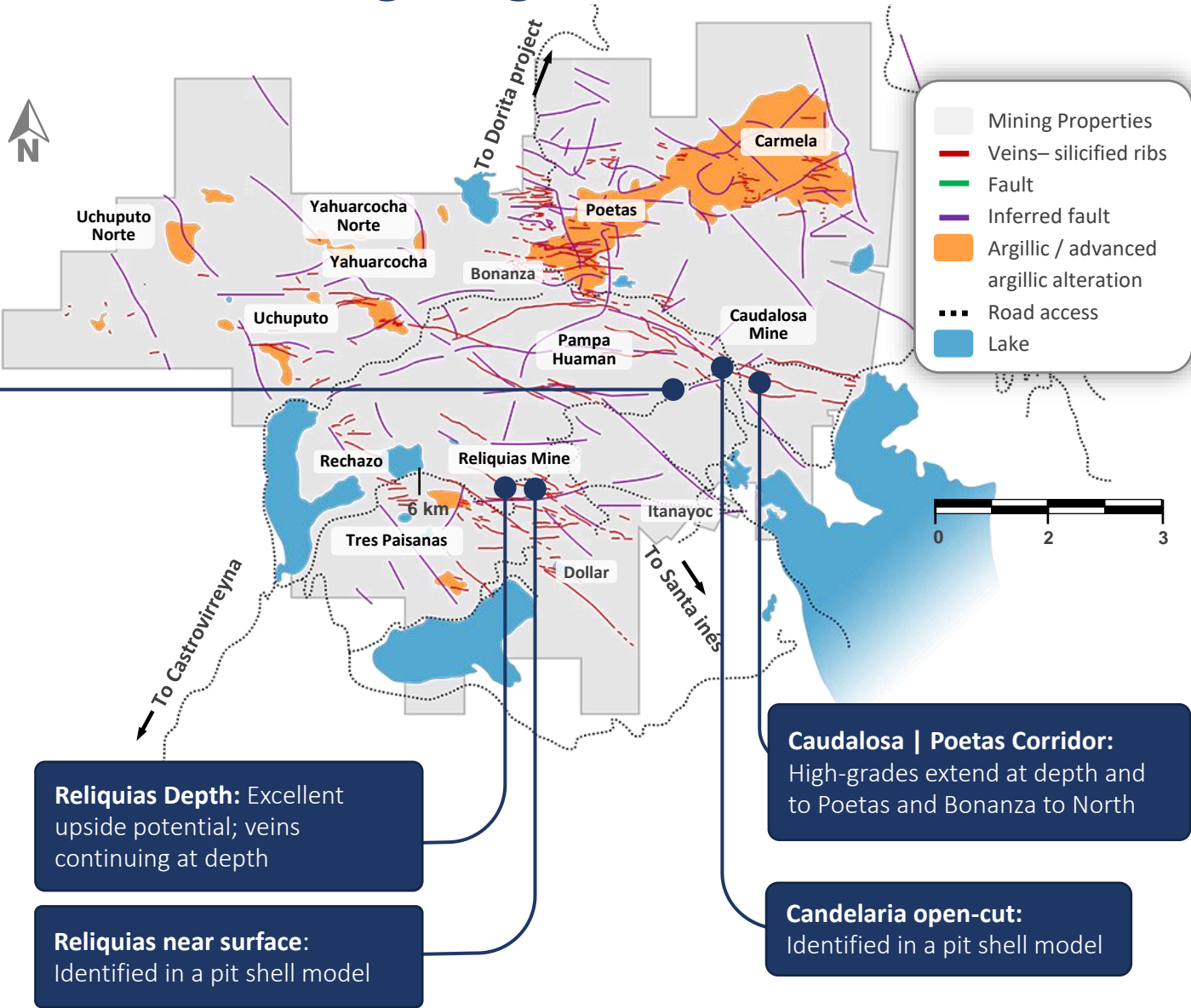
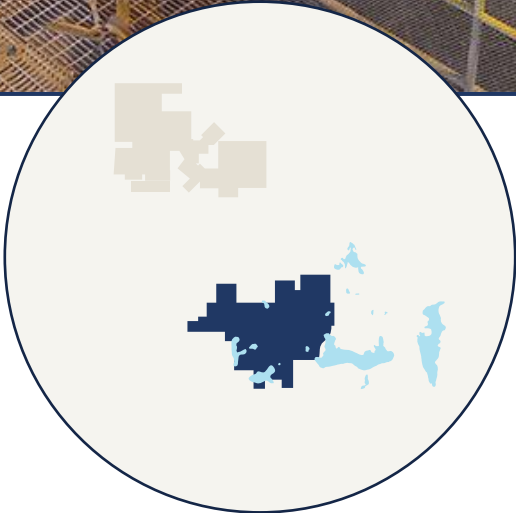
Caudalosa Grande UG and Candelaria OP

- Possible synergies to be realized by sharing common mine infrastructure to reduce up-front costs
- The corridor is an attractive extension to envisioned operations due to high grades and closeness to the processing plant

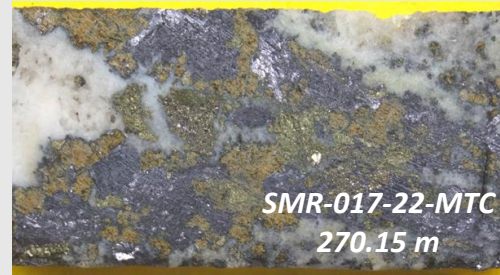
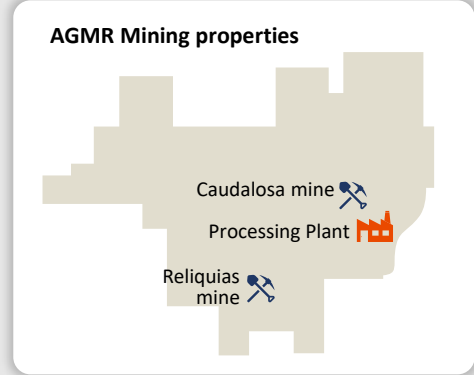
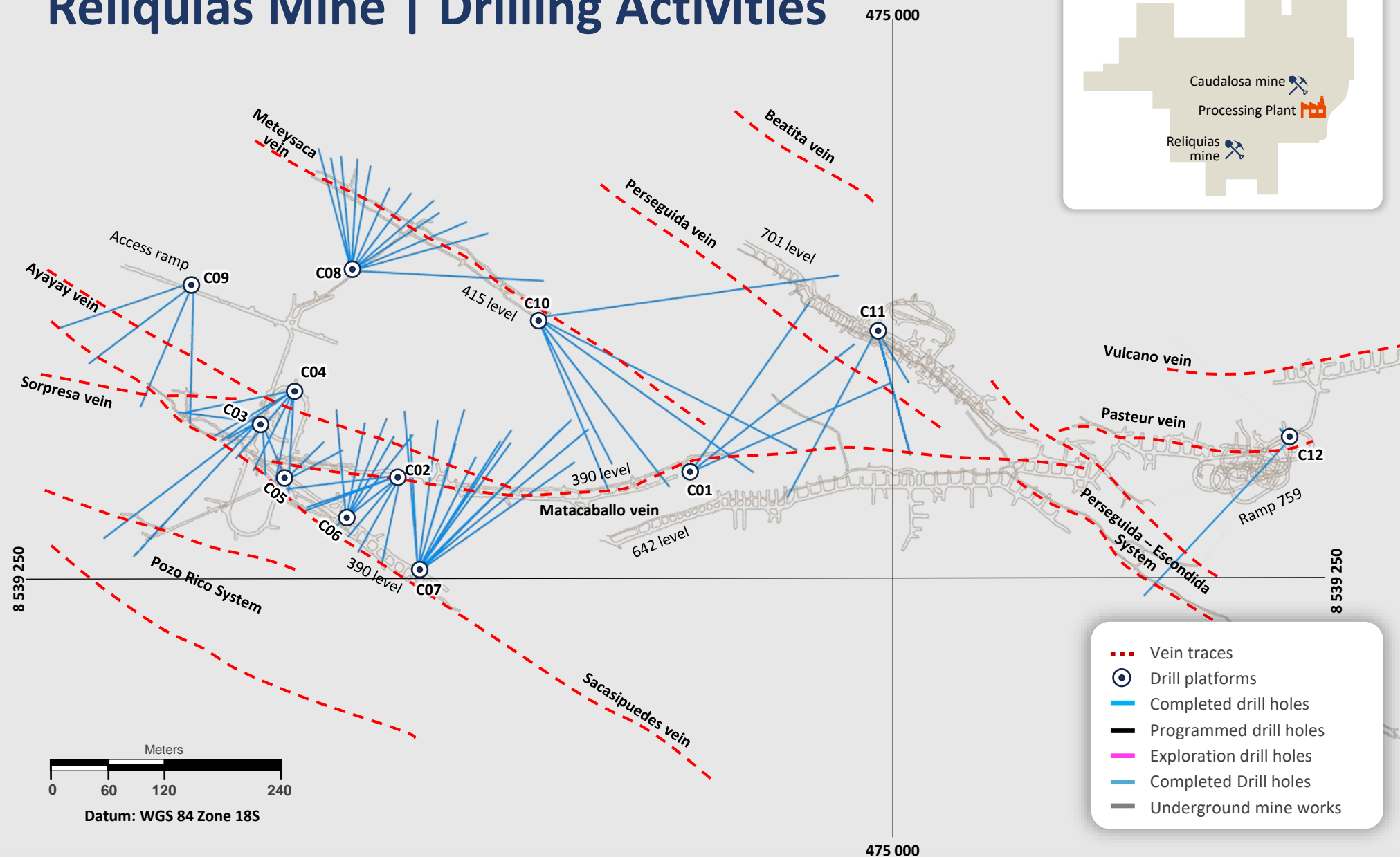
+30,000 ha Land Package



Reliquias Land Package – Short Term Drilling Targets



Reliquias Mine | Drilling Activities



+17,200m
of underground drilling

17,035m
drilled as of December 9th

72
Holes

12
drill platforms

*Convert historic resources
and increase the resource
base along strike, down dip,
and in new zones*

Reliquias Mine | Matacaballo Vein

Long Section - view to North

SMR-25-22-MTC

Interval: 5.0 m
Gold: 0.07 g/t
Silver: 98.51 g/t
Lead: 2.89 %
Copper: 0.45 %
Zinc: 3.68 %

SMR-08-22-MTC

Interval: 2.40m
Gold: 0.06 g/t
Silver: 127.04 g/t
Lead: 5.39%
Copper: 0.45%
Zinc: 2.07%

SMR-12-22-MTC

Interval: 4.2m
Gold: 0.12 g/t
Silver: 29.49 g/t
Lead: 1.67%
Copper: 0.17%
Zinc: 3.47%

SMR-10-22-MTC

Interval: 1.5m
Gold: 0.09 g/t
Silver: 174.63 g/t
Lead: 6.4%
Copper: 1.54%
Zinc: 3.13%

SMR-03-22-MTC

Interval: 9.2m
Gold: 0.13 g/t
Silver: 51.90 g/t
Lead: 0.87%
Copper: 0.41%
Zinc: 1.42%

SMR-05-22-MTC

Interval: 2.35m
Gold: 0.38 g/t
Silver: 30.67 g/t
Lead: 0.07%
Copper: 0.51%
Zinc: 3.51%

SMR-29-22-MTC

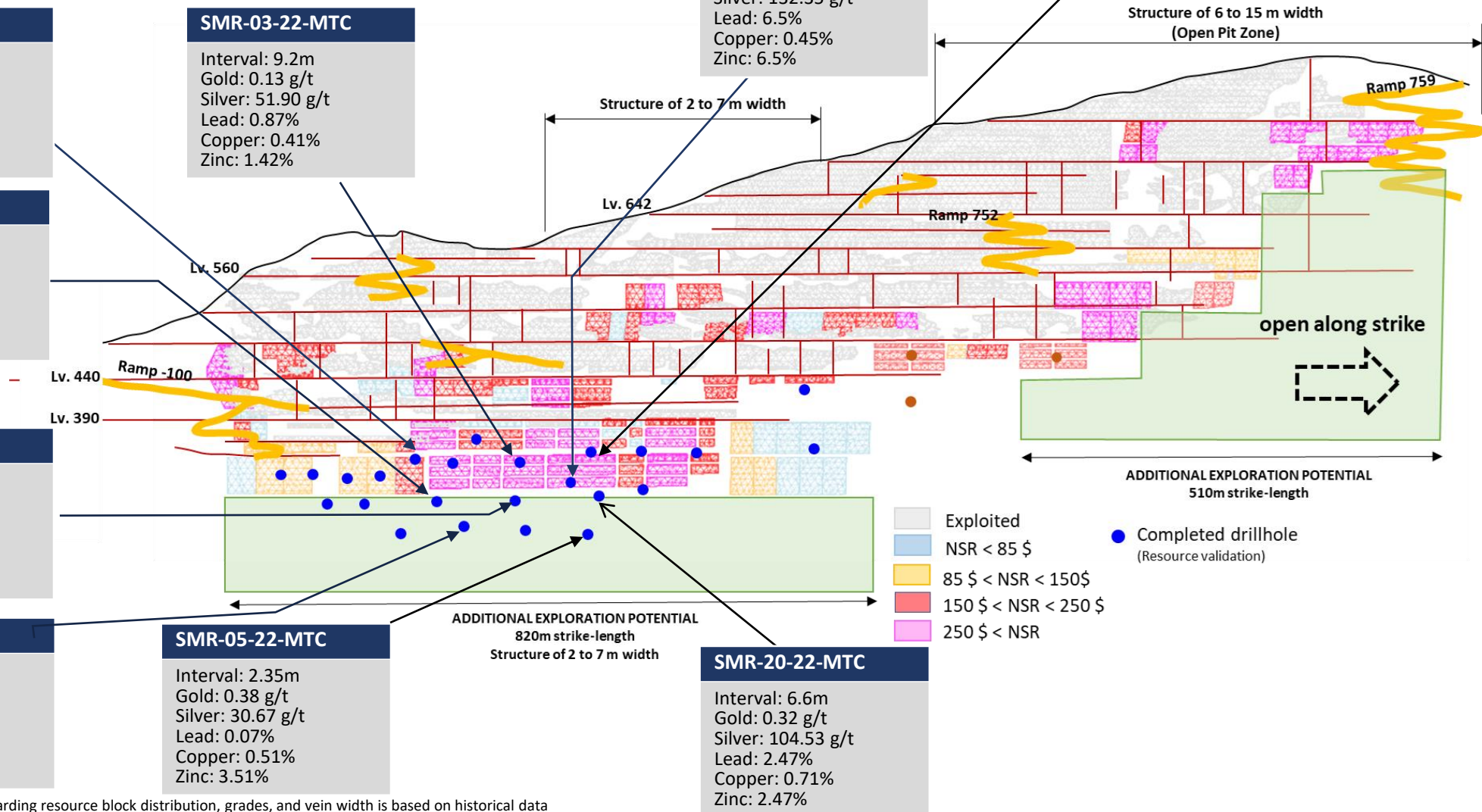
Interval: 1.55m
Gold: 0.06 g/t
Silver: 132.35 g/t
Lead: 6.5%
Copper: 0.45%
Zinc: 6.5%

SMR-20-22-MTC

Interval: 6.6m
Gold: 0.32 g/t
Silver: 104.53 g/t
Lead: 2.47%
Copper: 0.71%
Zinc: 2.47%

SMR-01-22-MTC

Interval: 10.4m
Gold: 0.17 g/t
Silver: 51.85 g/t
Lead: 0.24%
Copper: 2.95%
Zinc: 4.82%



Note: Shown information regarding resource block distribution, grades, and vein width is based on historical data

Reliquias Mine | Sacasipuedes Vein

Long Section – view to Northeast

SMR-18-22-SCS

Interval: 5.25m
Gold: 0.09 g/t
Silver: 82.51 g/t
Lead: 3.41%
Copper: 0.56%
Zinc: 5.42%

SMR-16-22-SCS

Interval: 1.40m
Gold: 0.3 g/t
Silver: 205 g/t
Lead: 13.5%
Copper: 0.76%
Zinc: 17.8%

SMR-14-22-SCS

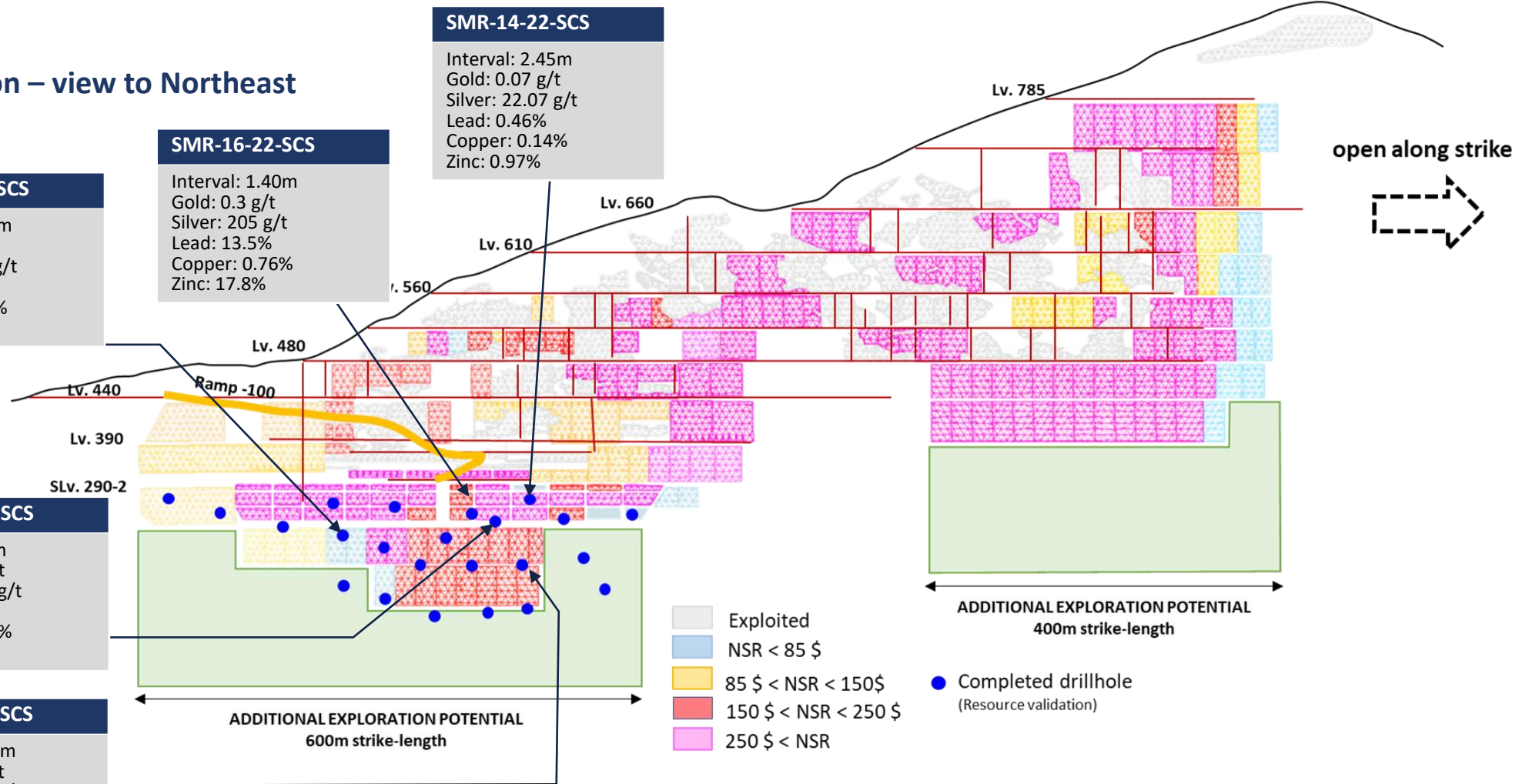
Interval: 2.45m
Gold: 0.07 g/t
Silver: 22.07 g/t
Lead: 0.46%
Copper: 0.14%
Zinc: 0.97%

SMR-02-22-SCS

Interval: 1.0m
Gold: 0.09 g/t
Silver: 235.0 g/t
Lead: 0.56%
Copper: 4.20%
Zinc: 5.10%

SMR-11-22-SCS

Interval: 0.60m
Gold: 1.15 g/t
Silver: 165.0 g/t
Lead: 2.00%
Copper: 0.23%
Zinc: 2.80%



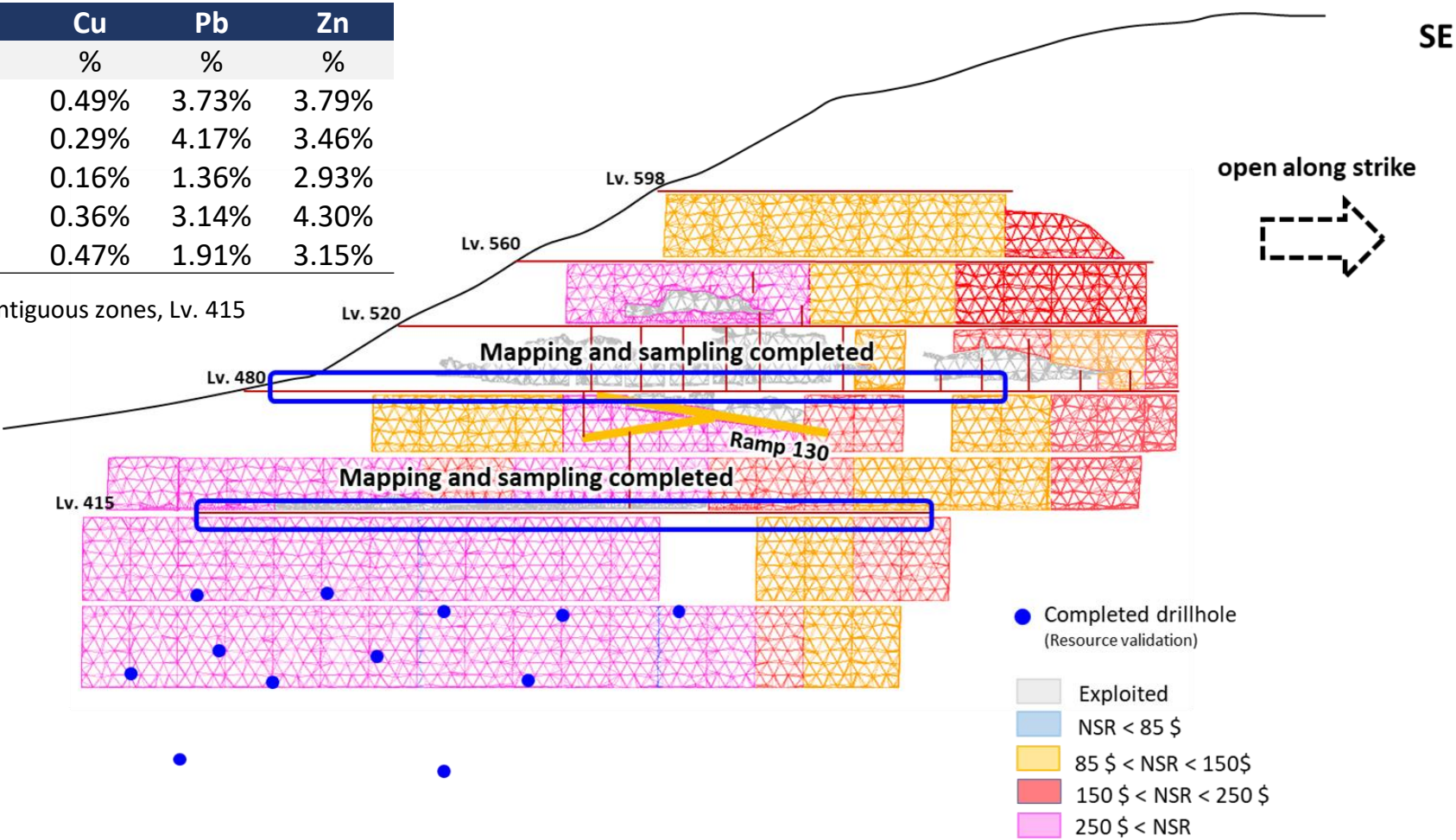
Note: shown information regarding resource block distribution, grades, and vein width is based on historical data

Reliquias Mine | Meteysaca Vein

Long Section - view to Northeast

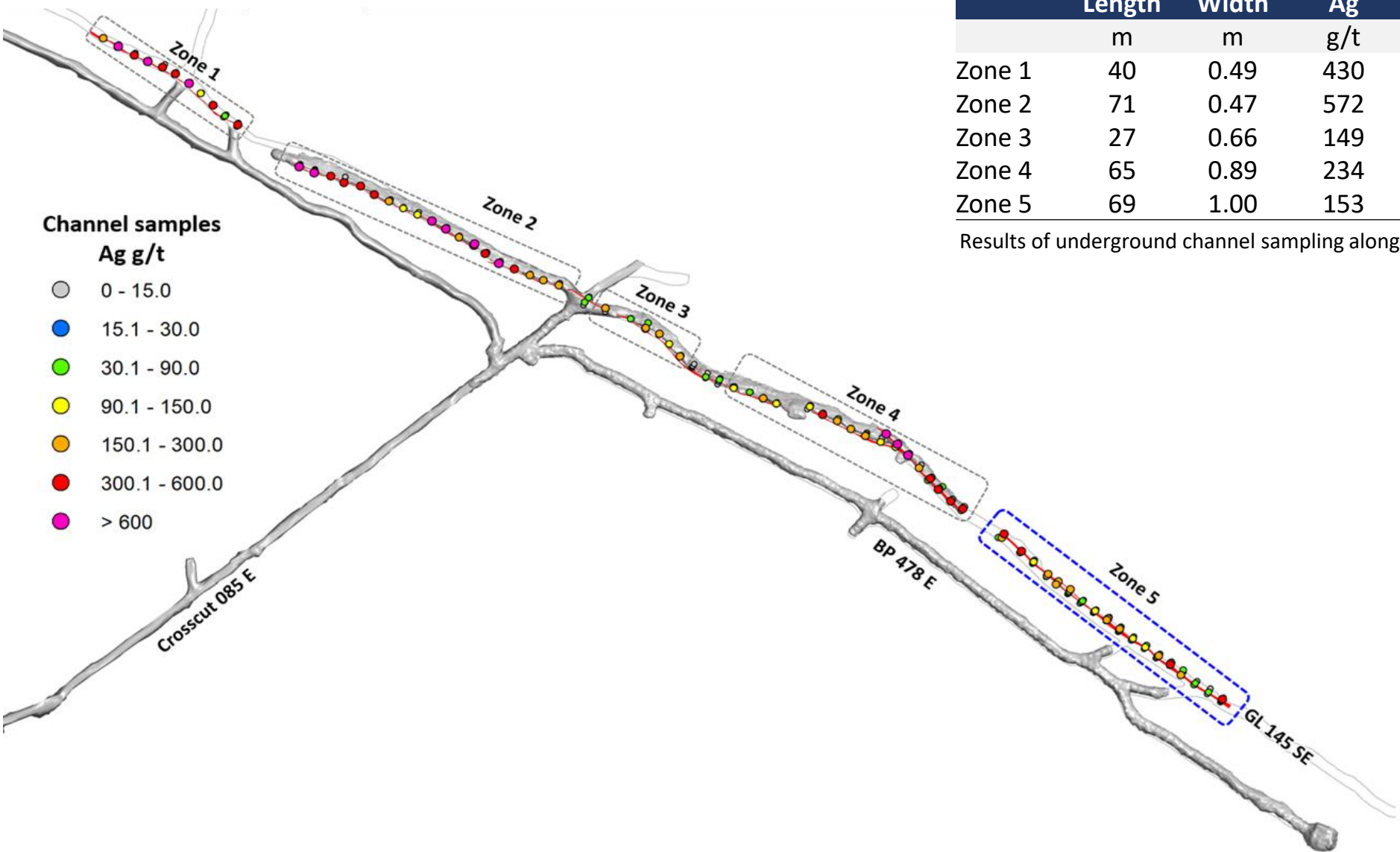
	Length	Width	Ag	Au	Cu	Pb	Zn
	m	m	g/t	g/t	%	%	%
Zone 1	40	0.49	430	0.68	0.49%	3.73%	3.79%
Zone 2	71	0.47	572	0.94	0.29%	4.17%	3.46%
Zone 3	27	0.66	149	0.30	0.16%	1.36%	2.93%
Zone 4	65	0.89	234	0.54	0.36%	3.14%	4.30%
Zone 5	69	1.00	153	0.44	0.47%	1.91%	3.15%

Results of underground channel sampling along 5 contiguous zones, Lv. 415



Note: shown information regarding resource block distribution, grades, and vein width is based on historical data

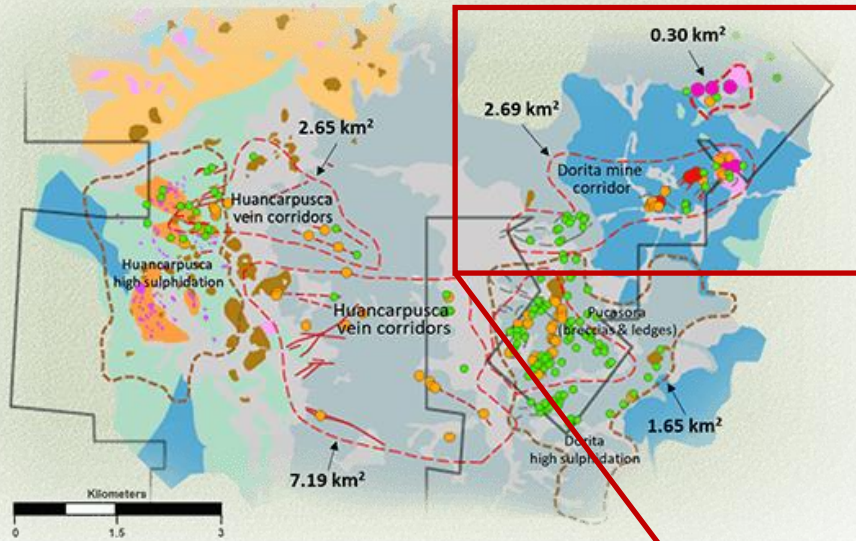
Reliquias Mine | Meteysaca Vein



	Length	Width	Ag	Au	Cu	Pb	Zn
	m	m	g/t	g/t	%	%	%
Zone 1	40	0.49	430	0.68	0.49%	3.73%	3.79%
Zone 2	71	0.47	572	0.94	0.29%	4.17%	3.46%
Zone 3	27	0.66	149	0.30	0.16%	1.36%	2.93%
Zone 4	65	0.89	234	0.54	0.36%	3.14%	4.30%
Zone 5	69	1.00	153	0.44	0.47%	1.91%	3.15%

Results of underground channel sampling along 5 contiguous zones, Lv. 415

Gold Exploration Potential | Dorita & Huancarpusca

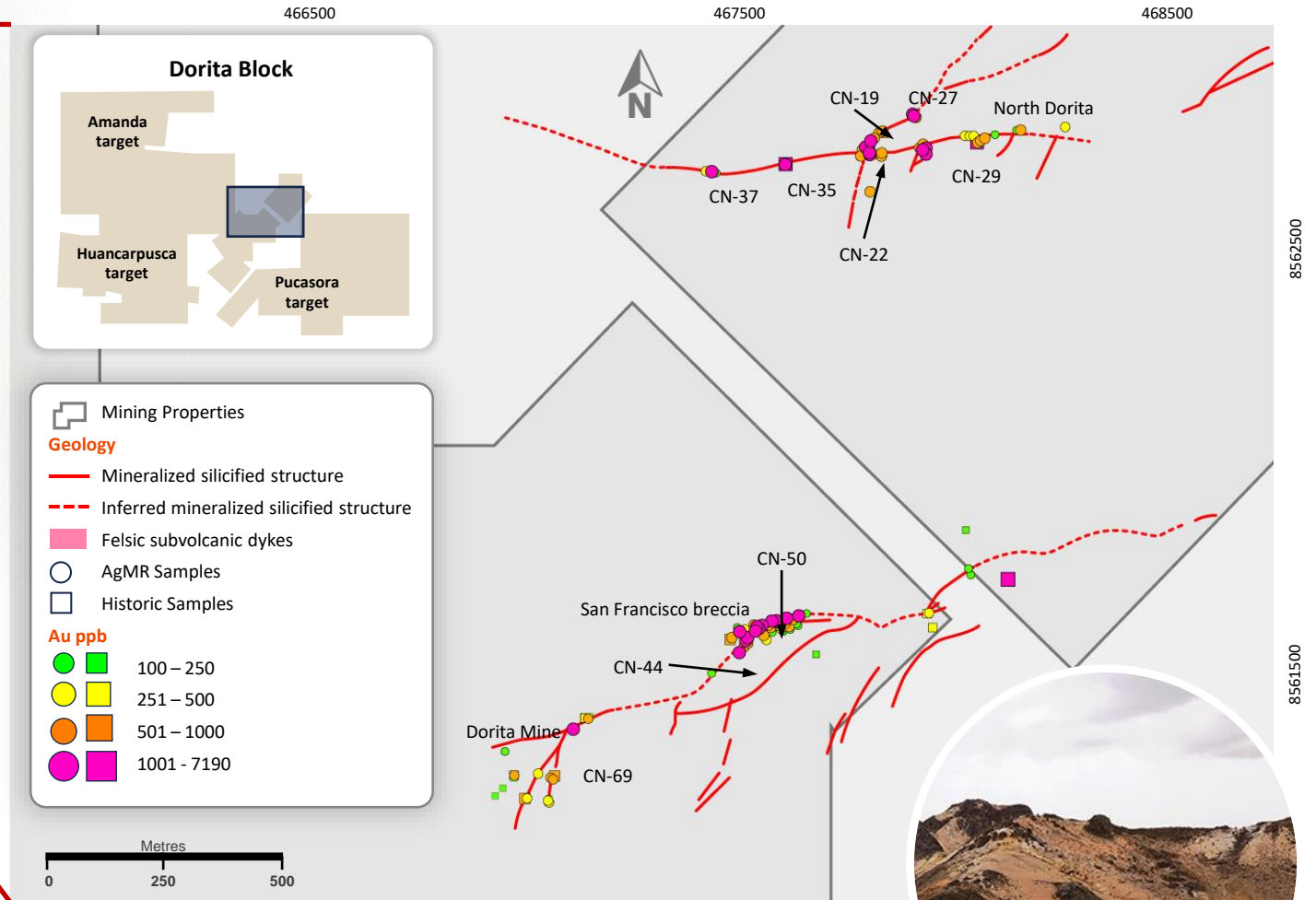


Surface channel sampling of Dorita and Dorita North vein structures

Map shows rock geochemistry – gold values

Highlights / selected channels:

- CN 27: 5.46 m @ **1.49 g/t Au** & 17.61 g/t Ag
- CN 29: 6.96 m @ **1.05 g/t Au** & 10.60 g/t Ag
- CN 44: 5.01 m @ **2.20 g/t Au** & 36.22 g/t Ag
- CN 50: 5.76 m @ **1.60 g/t Au** & 17.13 g/t Ag
- CN 69: 2.83 m @ **1.95 g/t Au** & 64.49 g/t Ag



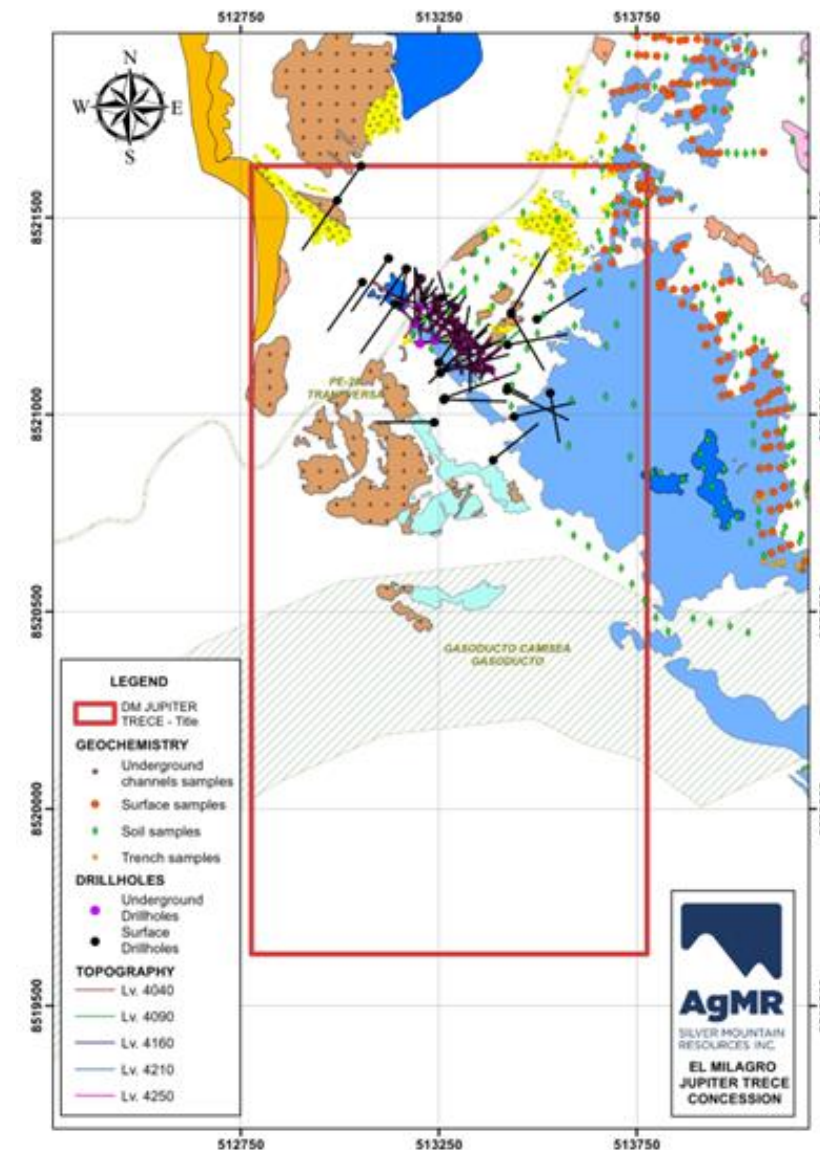
El Milagro Project

NI 43-101 Historical Resource Estimate – Inferred for El Milagro Project

COG Zinc Eq	Tonnes	Zinc Eq	Silver	Zinc	Lead
%	t	%	oz/t	%	%
≥ 1	873,259	5.49%	2.01	2.78%	1.10%
≥ 2	700,444	6.53%	2.38	3.30%	1.32%
≥ 3	617,905	7.06%	2.55	3.58%	1.44%
≥ 4	487,778	8.02%	2.97	3.93%	1.71%

The purpose of the NI 43-101 Technical Report was to review the existing information and assess the geological potential of El Milagro. Exploration work completed by previous owners included rock sampling and geological mapping, development of over 2,500 m of underground workings, and drilling of 53 diamond drill holes totalling 9,800 m.

The resource estimate prepared in 2009 generated 3 discrete orebodies: Genoveva 1, Genoveva 2, and El Milagro. All historic resources are located within the Jupiter Trece concession. AgMR has staked a total of 5,000 ha in the El Milagro area, of which 1,500 ha are already titled properties.



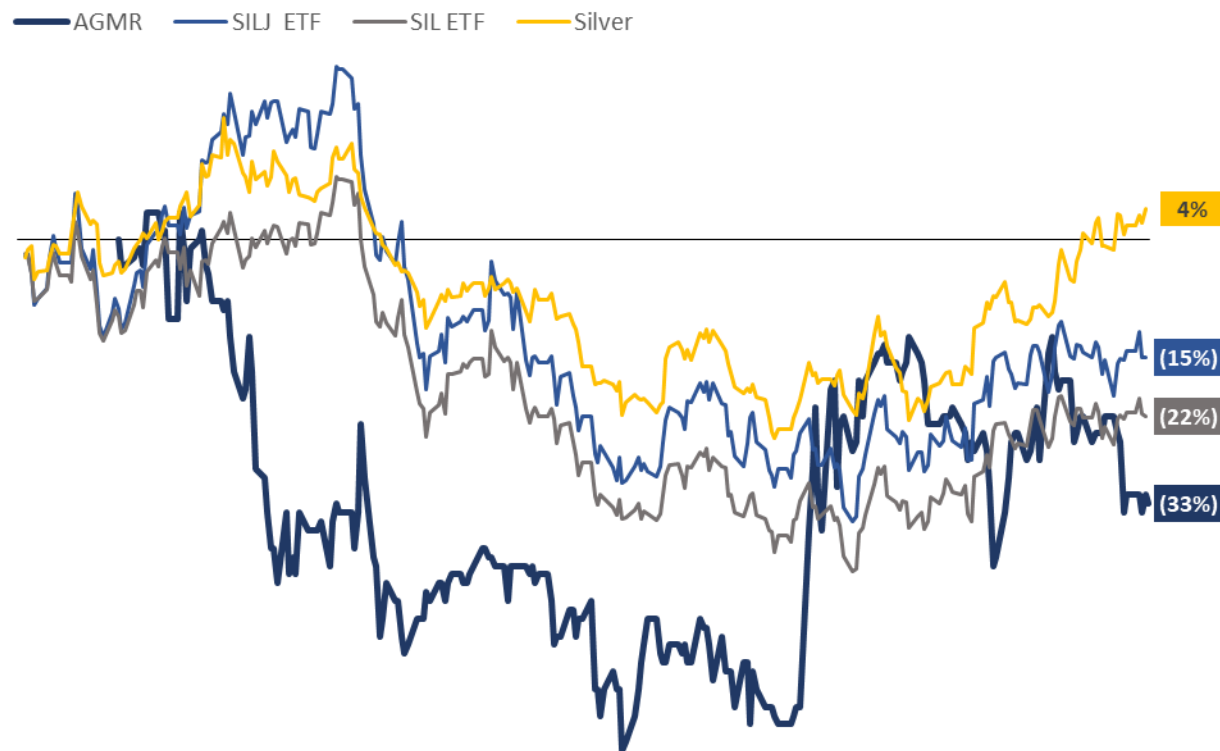
Our Strategy

CRITICAL MASS & DISTRICT CONSOLIDATION | Define | Increase | Convert Reserves & Resources



AGMR will incorporate a strict ESG strategy into every facet of the development process, being mindful of both the environment and our surrounding communities

Share Price Relative Performance



Jan-22 Feb-22 Mar-22 Apr-22 May-22 Jun-22 Jul-22 Aug-22 Sep-22 Oct-22 Nov-22 Dec-22⁶

Equity Research

RESEARCH  CAPITAL
CORPORATION

Sprott | Equity Research

VIII EIGHT
CAPITAL

Capital Structure

Market Cap.	C\$M	\$56.9 ¹
Cash	C\$M	\$17.6 ²
Debt	C\$M	\$- ³
Enterprise Value	C\$M	\$39.3

Shares Outstanding	MSh.	186.4
Stock Options	MSh.	13.8 ⁴
Warrants	MSh.	43.3 ⁵
Fully Diluted Shares	MSh.	243.5



5.4%



3.4%



4.4%

MERK®

5.4%

Sprott

3.2%

Other Insiders

33.6%

- December 30, 2022, closing price of \$0.31
- Reported cash balance as of September 30, 2022 of US\$13.0M (FX Rate 0.7389)
- Fully paid in February 2022
- Stock Options: 5.4M at US\$0.30, 3.0M at C\$0.50, and 5.5M at C\$0.38
- Warrants: 16.8M at US\$0.90 and 26.5M at C\$0.70
- As of December 30, 2022. AGMR's IPO closing on February 2, 2022 share price of C\$0.46

Strategic Summary

Resource Upgrade & Exploration

Aggressive DDH plan & studies

Resource Upgrade
New Zones Development

~40,000m

Debt Free Company

Mine Concession Rights

Maintain & consolidate
current land package

Concentrator Plant Refurbishment

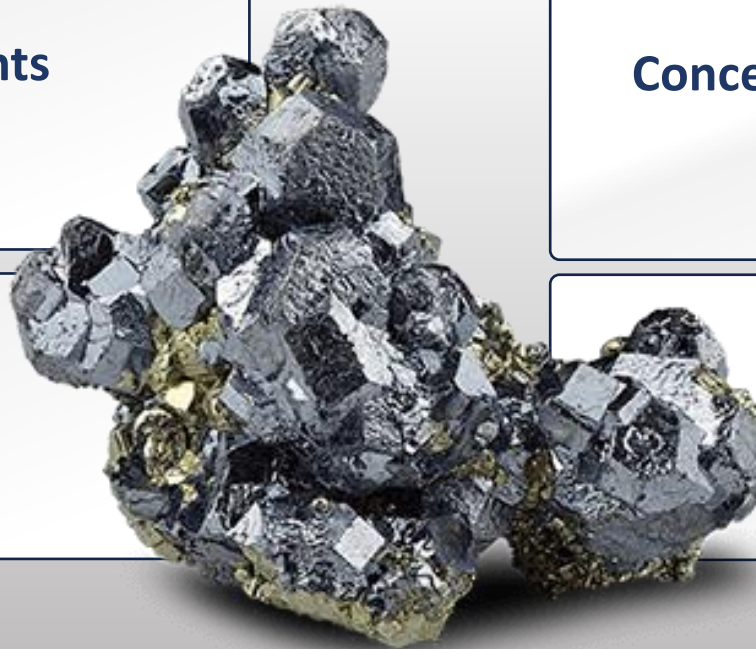
Set up the plant & components
to be ready to produce

Permits & Studies

Commence brownfield
& greenfield exploration

Tailings Dam

Establish stability and secure
future production



Investment Opportunity

Former silver producing property with substantial brownfield and greenfield upside

Significant district-wide exploration potential, with over 30,000 hectares of underexplored mining concessions

Aggressive development plans at Reliquias, with expedited process to start-up, made possible by advanced permitting and existing infrastructure

Existing underground workings and process plant in good condition, requiring only minor refurbishment to re-start production

Reliquias surface deposits add near-term optionality

Combined Reliquias mines and Dorita are a solid platform for further exploration and development



Appendix

www.agmr.ca

TSXV:AGMR

OTCQB:AGMRF

BVL:AGMR

Underground Drilling Results Summary (1/7)

Hole ID	From m	To m	Interval m	Silver g/t	Copper %	Lead %	Zink %	Gold g/t
SMR-001-22-MTC	258.30	268.70	10.40	51.85	0.24	2.95	4.82	0.17
<i>including</i>	258.30	260.90	2.60	54.46	0.30	2.95	4.03	0.08
<i>and</i>	263.90	266.15	2.25	84.49	0.49	4.24	9.45	0.10
<i>and</i>	268.05	268.70	0.65	152.00	0.33	13.90	16.70	0.16
SMR-002-22-SCS	46.05	47.05	1.00	235.00	0.56	4.20	5.10	0.09
	184.80	190.50	5.70	32.63	0.16	1.00	2.14	0.11
<i>including</i>	188.75	190.50	1.75	60.26	0.39	2.01	3.85	0.19
SMR-03-22-MTC	211.85	221.05	9.20	51.90	0.41	0.87	1.42	0.13
<i>including</i>	211.85	213.18	1.33	169.14	1.15	3.55	4.05	0.26
<i>and</i>	219.80	221.05	1.25	175.99	1.64	1.80	4.03	0.42
SMR-04-22-SCS	143.56	146.00	2.44	16.76	0.05	0.72	2.04	0.18
<i>including</i>	144.56	145.55	0.99	25.00	0.09	1.46	4.35	0.19
SMR-05-22-MTC	196.90	198.15	1.25	30.44	0.65	0.26	0.47	0.03
<i>including</i>	197.45	198.15	0.70	49.80	0.90	0.44	0.65	0.04
	296.60	297.60	1.00	18.40	1.50	0.18	2.10	0.02
	319.20	320.50	1.30	47.00	1.17	0.61	2.14	0.05
	327.50	335.95	8.45	18.34	0.44	0.10	1.76	0.17
<i>including</i>	329.25	331.60	2.35	30.67	0.51	0.07	3.51	0.38
<i>and</i>	333.70	335.95	2.25	15.15	0.56	0.13	1.96	0.10
SMR-06-22-SCS	148.60	150.00	1.40	1.53	0.00	0.27	0.97	0.03
SMR-07-22-SCS	241.70	244.75	3.05	3.43	0.00	0.15	0.29	0.06

Underground Drilling Results Summary (2/7)

Hole ID	From <i>m</i>	To <i>m</i>	Interval <i>m</i>	Silver <i>g/t</i>	Copper <i>%</i>	Lead <i>%</i>	Zink <i>%</i>	Gold <i>g/t</i>
SMR-08-22-MTC	186.55	187.05	0.50	47.00	0.10	3.10	11.10	0.06
	191.30	193.00	1.70	65.88	0.65	4.09	5.27	0.05
<i>including</i>	191.30	192.00	0.70	149.00	1.55	9.50	12.30	0.10
	197.00	198.00	1.00	25.90	0.09	2.60	3.10	0.03
<i>including</i>	197.00	197.50	0.50	38.70	0.11	4.10	4.80	0.05
	216.85	222.20	5.35	64.43	0.45	2.75	2.07	0.04
<i>including</i>	219.80	222.20	2.40	127.04	0.80	5.39	3.83	0.06
SMR-09-22-SCS	214.90	217.60	2.70	2.28	0.00	0.12	0.33	0.04
	214.90	215.60	0.70	5.80	0.01	0.15	0.68	0.07
SMR-10-22-MTC	224.05	224.55	0.50	77.30	0.27	4.50	5.30	0.06
	237.10	240.88	3.78	88.94	0.75	3.90	3.57	0.06
<i>including</i>	239.38	240.88	1.50	174.63	1.54	6.40	3.13	0.09
SMR-11-22-SCS	28.02	28.42	0.40	35.40	0.08	1.70	1.20	0.08
	40.35	40.65	0.30	106.00	0.04	0.34	0.25	0.36
	71.70	72.30	0.60	165.00	0.23	2.00	2.80	1.15
	202.80	206.40	3.60	12.44	0.02	0.41	0.67	0.07
<i>including</i>	203.80	204.40	0.60	26.00	0.05	0.86	1.40	0.09
SMR-12-22-MTC	243.80	248.00	4.20	29.49	0.17	1.67	3.47	0.12
<i>including</i>	244.55	246.00	1.45	62.47	0.37	3.06	7.19	0.29
SMR-13-22-SCS	7.70	8.00	0.30	24.80	0.08	0.39	1.30	1.50
	173.50	175.00	1.50	3.40	0.00	0.33	1.88	0.07

Underground Drilling Results Summary (3/7)

Hole ID	From m	To m	Interval m	Silver g/t	Copper %	Lead %	Zink %	Gold g/t
SMR-14-22-SCS	32.45	32.75	0.30	20.10	0.02	1.60	1.90	0.08
	144.55	147.00	2.45	22.07	0.14	0.46	0.97	0.07
<i>including</i>	144.55	145.10	0.55	72.80	0.54	0.96	2.50	0.08
SMR-015-22-MTC	189.40	189.90	0.50	34.10	0.38	1.20	3.60	0.03
SMR-016-22-SCS	52.15	52.45	0.30	44.70	0.35	2.70	6.50	0.10
	52.75	53.45	0.70	110.00	0.28	5.30	7.49	0.10
	54.90	56.30	1.40	205.00	0.76	13.50	17.80	0.30
<i>including</i>	54.90	55.60	0.70	269.00	1.25	14.70	14.30	0.24
SMR-017-22-MTC	211.90	212.40	0.50	45.60	0.13	4.00	18.80	0.05
	242.60	244.28	1.68	78.17	0.52	3.39	3.95	0.03
<i>including</i>	243.78	244.28	0.50	132.00	0.99	7.10	8.20	0.05
	258.37	265.95	7.58	45.43	0.34	4.54	5.59	0.03
<i>including</i>	258.37	259.85	1.48	83.24	0.89	7.83	4.21	0.06
<i>and</i>	264.55	265.95	1.40	116.14	0.55	12.97	19.77	0.06
	268.80	269.30	0.50	63.70	0.22	2.70	2.80	0.01
	269.90	271.15	1.25	161.46	0.77	17.92	7.84	0.03
<i>including</i>	269.90	270.40	0.50	345.00	1.74	39.40	8.20	0.04
	286.55	287.05	0.50	49.50	0.41	8.50	4.50	0.02
SMR-018-22-SCS	115.25	120.50	5.25	82.51	0.56	3.41	5.42	0.09
<i>including</i>	115.95	116.45	0.50	261.00	1.16	7.30	7.80	0.10
<i>and</i>	118.00	120.50	2.50	95.00	0.68	4.48	7.14	0.10
	123.30	125.10	1.80	53.90	0.10	5.89	8.36	0.13
<i>including</i>	123.30	124.30	1.00	70.70	0.16	7.40	11.20	0.15
SMR-019-22-SCS	78.00	78.30	0.30	8.60	0.01	0.40	0.45	1.21
	92.15	93.15	1.00	6.40	0.00	0.74	0.56	0.01

Underground Drilling Results Summary (4/7)

Hole ID	From m	To m	Interval m	Silver g/t	Copper %	Lead %	Zink %	Gold g/t
SMR-020-22-MTC	310.65	317.25	6.60	104.53	0.71	2.57	2.47	0.32
<i>including</i>	313.6	314.6	1.00	231.00	2.31	7.10	7.40	0.30
<i>including</i>	316.6	317.25	0.65	100.00	0.98	6.00	7.40	0.47
	332.8	334.05	1.25	59.65	0.62	4.54	3.47	0.10
SMR-021-22-SCS	85.30	85.80	0.50	5.90	0.01	0.13	0.30	0.23
	86.60	87.05	0.45	8.30	0.02	0.09	0.36	21.20
SMR-022-22-SCS	50.70	51.35	0.65	132.00	0.42	8.60	9.30	0.19
	52.00	52.30	0.30	36.50	0.04	4.20	2.20	0.06
	65.60	66.10	0.50	46.70	0.29	1.40	1.70	0.11
	132.15	132.80	0.65	29.40	0.14	1.70	2.60	0.02
	144.45	146.30	1.85	49.26	0.21	3.58	2.83	0.09
<i>including</i>	145.55	146.00	0.45	162.00	0.78	10.50	7.60	0.22
	151.80	152.70	0.90	53.22	0.15	3.02	4.30	0.19
<i>including</i>	151.80	152.30	0.50	76.60	0.24	5.30	7.50	0.28
SMR-23-22-MTC	169.95	170.25	0.30	59.80	0.11	1.20	5.20	0.04
	175.9	178.45	2.55	15.88	0.07	0.84	1.31	0.05
<i>including</i>	175.9	176.8	0.90	25.40	0.10	1.40	2.40	0.07
SMR-024-22-SCS	70.10	70.65	0.55	38.80	0.08	1.20	2.20	0.06
	75.50	75.90	0.40	40.40	0.10	2.20	0.76	0.06
	119.10	120.10	1.00	80.72	0.43	2.20	2.88	2.56
<i>including</i>	119.10	119.50	0.40	155.00	1.00	4.70	6.50	5.86
	120.60	121.05	0.45	118.00	0.64	5.80	3.90	0.15
	121.60	121.90	0.30	43.50	0.34	0.36	0.48	0.08
	179.35	179.95	0.60	33.10	0.12	3.40	5.30	0.16
	211.80	212.50	0.70	31.40	0.15	0.87	4.00	0.25

Underground Drilling Results Summary (5/7)

Hole ID	From m	To m	Interval m	Silver g/t	Copper %	Lead %	Zink %	Gold g/t
SMR-25-22-MTC	174.08	174.87	0.79	33.75	0.39	1.48	1.51	0.05
	176.05	176.35	0.30	67.50	0.21	2.00	2.40	0.02
	179.23	179.53	0.30	47.50	0.18	0.95	2.00	0.02
	183.95	188.95	5.00	98.51	0.45	2.89	3.68	0.07
	<i>including</i>	184.85	185.5	0.65	488.00	1.20	15.70	0.15
	<i>and</i>	185.5	186.05	0.55	109.00	1.63	0.11	0.05
	195.5	196.5	1.00	391.00	4.47	11.90	11.10	0.29
SMR-026-22-SCS	46.60	47.05	0.45	72.80	0.10	3.50	5.40	0.13
	56.80	57.15	0.35	44.80	0.42	0.72	0.72	0.08
	156.55	158.50	1.95	48.13	0.37	2.06	4.47	0.08
	<i>including</i>	156.55	157.20	0.65	53.90	0.27	3.20	0.10
	<i>and</i>	157.20	157.95	0.75	55.40	0.65	1.20	0.08
	<i>and</i>	157.95	158.50	0.55	31.40	0.12	1.90	0.06
SMR-027-22-MTC	168.45	169.3	0.85	24.29	0.07	1.67	3.67	0.06
	185.85	186.5	0.65	23.90	0.15	0.69	2.30	0.13
SMR-028-22-SCS	38.60	39.50	0.90	37.70	0.15	1.10	3.80	0.11
	39.50	40.35	0.85	11.80	0.02	0.27	0.32	0.05
	45.70	47.00	1.30	78.09	0.13	1.05	0.90	0.04
	<i>including</i>	45.70	46.00	0.30	268.00	0.43	2.10	0.06
	<i>and</i>	46.70	47.00	0.30	63.40	0.10	2.20	0.06
	170.05	170.45	0.40	18.40	0.08	0.60	1.80	0.04
	170.45	170.90	0.45	19.60	0.02	0.16	0.24	0.06
	171.65	172.05	0.40	16.20	0.08	0.49	0.55	0.07
	172.05	172.50	0.45	45.50	0.09	0.43	1.70	0.07

Underground Drilling Results Summary (6/7)

Hole ID	From	To	Interval	Silver	Copper	Lead	Zink	Gold
	m	m	m	g/t	%	%	%	g/t
SMR-029-22-MTC	83.35	83.95	0.60	107.00	0.12	1.20	2.00	0.25
	279.55	280.05	0.50	92.60	0.98	2.10	3.30	0.15
	284	285.55	1.55	132.35	0.45	6.50	6.50	0.06
<i>including</i>	284.75	285.55	0.80	173.00	0.51	6.40	4.90	0.06
SMR-032-22-MTC	118.50	119.90	1.40	68.53	0.36	2.38	3.23	0.07
	154.25	154.65	0.40	141.00	0.33	2.40	3.80	0.03
	166.35	167.60	1.25	98.90	1.40	1.92	2.71	0.06
<i>including</i>	167.15	167.60	0.45	170.00	2.22	3.80	4.50	0.11
SMR-033-22-MTC	113.80	114.45	0.65	35.10	0.23	1.60	2.20	0.09
	152.60	152.90	0.30	374.00	0.69	3.70	1.90	0.04
	162.95	163.40	0.45	107.00	0.28	2.80	6.60	0.11
	178.30	178.70	0.40	41.30	0.37	3.50	5.40	0.05
	180.20	181.30	1.10	76.27	1.38	0.70	3.87	0.03
	184.30	186.60	2.30	81.03	0.82	4.89	9.04	0.08
<i>including</i>	185.85	186.60	0.75	191.00	1.75	11.80	15.80	0.06
	191.95	192.65	0.70	42.10	0.21	4.80	1.20	0.04
SMR-035-22-MTC	51.60	52.00	0.40	135.00	0.15	1.50	1.30	0.31
SMR-036-22-MTC	79.95	80.60	0.65	33.20	0.14	1.30	2.10	11.10
	132.40	132.80	0.40	96.10	0.54	1.00	1.60	0.11
	133.70	134.40	0.70	51.70	0.13	1.20	3.70	0.09
	187.15	187.50	0.35	47.70	0.43	8.50	15.00	0.10
	192.25	192.90	0.65	36.90	0.67	1.00	1.00	0.07
	196.90	201.10	4.20	117.27	1.08	1.49	2.13	0.04
<i>including</i>	197.55	200.10	2.55	150.33	1.40	1.77	2.05	0.06
	203.10	204.10	1.00	58.40	0.84	1.70	0.04	0.02

Underground Drilling Results Summary (7/7)

Hole ID	From <i>m</i>	To <i>m</i>	Interval <i>m</i>	Silver <i>g/t</i>	Copper <i>%</i>	Lead <i>%</i>	Zink <i>%</i>	Gold <i>g/t</i>
SMR-38-22-MTC	88.00	88.30	0.30	45.10	0.15	0.24	1.10	0.10
	89.15	89.45	0.30	53.40	0.08	0.27	2.20	0.10
	137.15	137.75	0.60	41.00	0.48	1.10	2.10	0.06
	169.10	169.75	0.65	86.30	0.46	3.00	7.80	0.08
	173.05	176.00	2.95	90.50	1.09	0.70	1.92	0.04
<i>including</i>	174.00	174.95	0.95	129.00	1.44	0.36	2.80	0.04
<i>and</i>	175.50	176.00	0.50	128.00	1.94	2.40	0.97	0.06
SMR-040-22-MTC	209.95	210.75	0.80	40.04	0.28	0.79	2.17	0.09
	214.85	215.60	0.75	108.00	1.24	1.00	2.00	0.04
SMR-051-22-MTC	231.30	231.60	0.30	39.20	0.35	0.49	0.23	0.01
	268.15	268.50	0.35	30.20	0.00	0.09	0.11	0.34
SMR-054-22-MTC	241.05	241.85	0.80	24.12	0.13	1.70	0.04	0.33
	253.85	255.25	1.40	54.83	0.21	1.92	2.36	0.14
SMR-056-22-MTC	266.95	268.10	1.15	85.62	0.88	1.56	3.72	0.05
<i>including</i>	266.95	267.25	0.30	267.00	3.28	3.20	13.10	0.13
	294.50	298.10	3.60	135.29	0.55	5.48	7.25	0.23
<i>including</i>	294.50	295.30	0.80	145.00	1.17	8.00	11.10	0.16
<i>and</i>	295.80	296.70	0.90	208.00	0.93	10.80	13.40	0.19
<i>and</i>	297.75	298.10	0.35	402.00	0.10	2.50	1.20	1.34
SMR-059-22-MTC	375.80	377.05	1.25	153.60	0.09	1.80	3.34	1.31
<i>including</i>	376.30	377.05	0.75	234.00	0.14	2.70	5.10	1.48

Channel Sampling Results Summary (1/6)

Metseysaca Vein - Level 415

Zone	Channel ID	Width (m)	Ag g/t	Cu %	Pb %	Zn %	Au g/t
		<i>m</i>	<i>g/t</i>	<i>%</i>	<i>%</i>	<i>%</i>	<i>g/t</i>
1	C34	1.00	220.2	0.16	0.75	0.75	2.27
1	C35	0.40	35.6	0.04	0.40	1.90	0.05
1	C36	0.30	336.0	0.62	0.50	0.52	0.47
1	C37	0.30	97.7	0.23	1.50	2.20	0.11
1	C38	0.40	662.0	1.14	6.60	11.40	0.56
1	C39	0.40	407.0	0.77	3.40	2.90	0.20
1	C40	0.40	596.0	0.36	7.20	3.00	0.24
1	C41	0.60	1100.0	0.57	8.80	7.40	0.49
1	C42	0.60	335.0	0.16	2.90	5.40	0.21
1	C43	0.40	785.0	1.01	9.90	6.10	0.75
1	C44	0.60	197.0	0.77	1.30	1.80	0.15
2	C28	0.50	282.0	0.23	7.60	9.30	0.22
2	C29	0.30	157.0	0.10	1.70	1.30	0.29
2	C30	0.40	152.0	0.16	1.40	2.00	4.15
2	C31	0.30	470.0	0.22	3.70	3.80	0.20
2	C32	0.60	385.5	0.13	1.88	3.02	0.71
2	C33	0.80	228.9	0.10	0.40	0.37	0.35
2	C45	0.90	1081.0	0.22	2.88	1.43	2.14
2	C46	0.40	199.0	0.33	3.30	5.30	0.40
2	C47	0.50	887.0	0.21	3.70	4.60	2.26

Channel Sampling Results Summary (2/6)

Meteksaca Vein - Level 415

Zone	Channel ID	Width (m)	Ag g/t	Cu %	Pb %	Zn %	Au g/t
		<i>m</i>	<i>g/t</i>	<i>%</i>	<i>%</i>	<i>%</i>	<i>g/t</i>
2	C48	0.40	1200.0	0.98	7.90	8.10	2.74
2	C49	0.40	125.0	0.11	1.10	1.80	0.59
2	C50	0.30	126.0	0.28	4.10	4.30	0.54
2	C51	0.40	159.0	0.22	3.00	4.20	0.41
2	C52	0.30	329.0	0.35	7.50	12.10	0.28
2	C53	0.30	420.0	0.18	4.00	4.50	0.82
2	C54	0.40	514.0	0.22	4.10	2.40	0.25
2	C55	0.45	327.0	0.15	5.40	0.66	0.12
2	C56	0.40	2530.0	1.27	12.70	5.20	0.64
2	C57	0.85	668.8	0.36	6.19	0.88	0.19
3	C1	0.30	87.0	0.42	2.90	3.90	0.32
3	C2	0.30	258.0	0.53	9.00	17.60	0.59
3	C3	0.45	88.6	0.06	0.79	2.60	0.11
3	C4	1.15	178.4	0.11	0.65	0.98	0.50
3	C5	1.00	154.1	0.05	0.22	2.57	0.31
3	C6	0.40	103.0	0.05	0.76	2.30	0.21
3	C7	1.00	143.7	0.24	1.07	1.23	0.11
4	C11	1.10	95.5	0.06	2.44	2.28	0.76
4	C12	0.40	69.6	0.32	1.00	3.40	0.17
4	C13	0.30	184.0	0.20	3.80	5.80	0.86

Channel Sampling Results Summary (3/6)

Meteksaca Vein - Level 415

Zone	Channel ID	Width (m)	Ag g/t	Cu %	Pb %	Zn %	Au g/t
		<i>m</i>	<i>g/t</i>	<i>%</i>	<i>%</i>	<i>%</i>	<i>g/t</i>
4	C14	0.40	98.9	0.13	3.30	6.00	0.27
4	C15	0.90	75.1	0.13	0.79	0.82	0.48
4	C16	0.45	416.0	0.97	7.80	9.40	0.39
4	C17	0.30	297.0	0.36	4.10	5.80	0.61
4	C18	0.30	254.0	0.65	2.30	3.10	0.30
4	C19	0.50	235.0	0.65	2.30	4.70	0.47
4	C20	2.90	176.2	0.23	3.15	2.25	0.26
4	C21	1.70	323.6	0.32	2.01	6.32	0.61
4	C22	0.60	685.0	0.93	4.20	4.50	0.89
4	C23	0.50	188.0	0.21	2.10	0.98	0.09
4	C24	0.95	351.8	0.62	6.44	10.08	0.85
4	C25	1.30	166.3	0.30	4.82	5.65	0.74
4	C26	1.10	337.9	0.27	3.02	5.05	0.92
4	C27	1.40	203.3	0.63	1.97	2.84	0.45
5	C58	1.95	178.3	0.22	0.46	1.81	0.24
5	C59	1.30	150.2	0.29	1.64	1.44	0.40
5	C60	0.80	112.2	0.30	2.93	4.28	0.36
5	C61	0.95	190.7	0.20	2.05	9.37	0.31
5	C62	1.95	177.8	0.35	2.03	3.60	0.31
5	C63	0.60	189.0	0.26	1.50	2.90	0.64

Channel Sampling Results Summary (4/6)

Meteksaca Vein - Level 415

Zone	Channel ID	Width (m)	Ag g/t	Cu %	Pb %	Zn %	Au g/t
		<i>m</i>	<i>g/t</i>	<i>%</i>	<i>%</i>	<i>%</i>	<i>g/t</i>
5	C64	0.80	64.1	0.11	0.36	1.33	0.20
5	C65	0.90	110.9	0.21	3.81	5.69	0.26
5	C66	1.00	212.5	1.19	3.50	0.00	1.10
5	C67	0.60	156.0	0.48	4.40	10.90	0.33
5	C68	0.70	114.0	0.95	1.90	2.80	0.17
5	C69	1.10	99.0	0.24	0.56	0.78	0.14
5	C70	1.05	176.3	0.72	0.12	3.04	0.58
5	C71	0.90	248.8	2.07	3.06	2.36	0.21
5	C72	0.70	165.0	0.05	4.10	0.65	0.09
5	C73	1.20	57.6	0.02	0.93	0.78	0.23
5	C74	0.60	88.1	0.07	2.00	3.70	0.10
5	C75	0.85	215.4	1.08	2.54	6.48	2.57

Channel Sampling Results Summary (5/6)

Matacaballo Vein - Sublevel 735-1

Zone	Channel ID	Width (m)	Ag g/t	Cu %	Pb %	Zn %	Au g/t
		<i>m</i>	<i>g/t</i>	<i>%</i>	<i>%</i>	<i>%</i>	<i>g/t</i>
1	CHN 01	2.87	475.8	0.24	5.71	6.21	15.34
1	CHN 02	2.15	165.4	0.47	10.97	16.06	0.18
1	RCR 01	2.83	121.7	0.04	0.32	0.42	0.59
1	CHN 03	1.76	169.4	0.38	8.94	13.92	0.18
1	CHN 04	1.10	114.5	0.34	5.97	12.63	0.10
1	CHN 05	1.24	155.7	0.58	10.91	17.52	0.15
1	CHN 06	0.92	178.0	0.65	12.53	18.77	0.13
1	RCR 02	1.78	61.5	0.12	0.37	1.30	0.54
1	CHN 07	1.32	89.5	0.31	3.88	5.02	0.09
1	CHN 08	2.16	51.2	0.14	2.62	2.20	0.07
1	CHN 09	1.48	102.5	0.65	102.47	3.26	0.25
1	CHN 10	1.94	544.3	1.62	12.83	18.26	0.59
1	CHN 11	1.72	273.9	0.75	4.95	5.08	0.31
1	CHN 12	1.65	139.6	0.67	4.89	4.86	0.82
1	CHN 13	0.87	572.3	2.01	4.20	7.62	2.27
1	CHN 14	1.16	157.3	1.20	7.67	12.79	8.16
1	CHN 15	1.66	95.0	0.46	5.97	7.11	2.43
1	CHN 16	1.45	128.5	0.23	4.30	4.86	1.65
1	CHN 17	2.15	130.2	0.59	3.89	7.34	0.92
1	CHN 18	2.88	41.7	0.25	1.67	2.75	0.16

Channel Sampling Results Summary (6/6)

Matacaballo Vein - Sublevel 735-1

Zone	Channel ID	Width (m)	Ag g/t	Cu %	Pb %	Zn %	Au g/t
		<i>m</i>	<i>g/t</i>	<i>%</i>	<i>%</i>	<i>%</i>	<i>g/t</i>
1	CHN 19	1.50	135.4	1.26	2.66	2.11	1.02
1	CHN 20	1.35	180.2	1.46	2.29	13.28	18.20
1	CHN 20	1.60	77.8	0.18	5.43	4.83	11.43
1	RCR 03	1.51	9.6	0.02	0.29	1.00	5.56
2	CHN 21	1.78	85.4	0.49	3.41	4.71	0.97
2	CHN 22	1.35	67.1	0.27	2.71	1.86	0.28
2	CHN 23	1.17	73.0	0.27	2.85	4.80	0.36
3	CHN 24	1.57	26.7	0.11	0.70	1.23	0.26
3	CHN 25	1.59	13.5	0.05	0.43	0.59	0.17
3	CHN 26	1.67	11.2	0.02	0.41	0.59	0.07
3	CHN 27	1.35	13.7	0.07	0.34	0.61	0.10
3	CHN 28	1.19	5.4	0.01	0.20	0.23	0.14
3	CHN 29	0.91	13.3	0.05	0.54	0.64	0.45

Management Team



Alfredo Bazo

President, CEO & Director

- Civil Engineer and certified Project Management Professional
- Strong track record in project management, financial analysis, cost control and strategic planning
- Former CEO/CFO positions with Master Drilling Peru, Buenaventura Ingenieros SA, and A TIK I&C SAC
- Former Cost Control Engineer for Minera Yanacocha SRL



Jean Pierre Fort

CFO

- Strong corporate mining experience track record
- +10 years of mining experience in supply chain, projects, investor relations, and finance at Volcan Cía. Minera in Peru
- Experience working in Mining & Metals Investment Banking in Canada
- MBA from Rotman School of Management, University of Toronto



Richard Contreras

Chief Operating Officer

- Mining engineer with more than 30 years of experience in the areas of underground operations, open pit, planning and projects
- Mr. Contreras previously worked as a country manager (Peru) for a subsidiary of Pan American Silver Corp.
- Mr. Contreras holds a Bachelor of Science, Mining Engineer from the Universidad Nacional de Ingeniería (Peru)



Torsten Danne

Director of Exploration

- Mining exploration leader with +20 years of international experience
- Former Exploration Manager at Southern Copper (Argentina) and Nexa Resources (Peru)
- Strong experience in evaluating multiple types of deposits with specific focus on precious metals
- MSc in Mineral Exploration from Royal School of Mines, Imperial College, UK



Luis Perales

Plant Superintendent

- +18 years of experience developing and constructing mining plants in Latam
- Former superintendent of projects at Consorcio Minero Horizonte, Buenaventura Ingenieros, Volcan, and Nexa
- Metallurgist Eng. from Universidad Nacional de Ingeniería (UNI)



Board of Directors



Jose Vizquerra

Chairman

- President & CEO at O3 Mining
- Former Exc. VP of Strategic Development for Osisko Mining Former Head of BD for Cia. de Minas Buenaventura
- Former Production and exploration geologist at the Red Lake Gold Mine
- Qualified Person pursuant to NI 43-101



Julio Arce

Director

- Broad experience in the global mining industry, having worked in 6 different countries for more than 20 years
- Managed main offices and ran the non-ferrous and bulk commodities divisions for Trafigura
- London Business School EMBA with a major in Finance and Strategy



Alfredo Plenge

Director

- +25 years experience in the mining and finance industries
- Private entrepreneur developing mineral prospects and mining opportunities in Peru
- Former CEO of Castrovirreyna Mining Group, CFO at Sociedad Minera El Brocal, and VP at BCP, Peru's largest bank
- M.Sc. in Mineral Economics from the Colorado School of Mines and MBA from McGill University



Blair Zaritsky

Independent Director

- +15 years of experience in the mining industry
- Currently serves as CFO at Osisko Mining and O3 Mining
- Mr. Zaritsky serves as a board member of other public companies such as Moneta Gold and Talisker Resources
- Holds CPA designation



Victoria Vargas

Independent Director

- +18 years of experience in the mining industry
- Current VP of Investor Relations at Minera Alamos and CFO at VMS Mining
- Former VP Corporate Communication & IR at Sierra Metals
- Holds an MBA and Bachelor in Economics



Juan Carlos Ortiz

Independent Director

- + 25 years of professional experience as a mining engineer
- Currently serves as VP of Operations at Compañía de Minas Buenaventura
- He has served in various technical roles to established mining companies such as Volcan Compañía Minera, Compañía Minera Milpo, and Compañía Minera Atacocha
- Holds a master's degree in Mineral Engineering Management from Penn State University

Why Silver?

Silver is a valuable & practical industrial commodity... and appealing precious metal

Annual global silver consumption of
~1Boz Ag

Industry has been in
physical deficit recently

Silver is the **best thermal and electrical conductor** of all metals

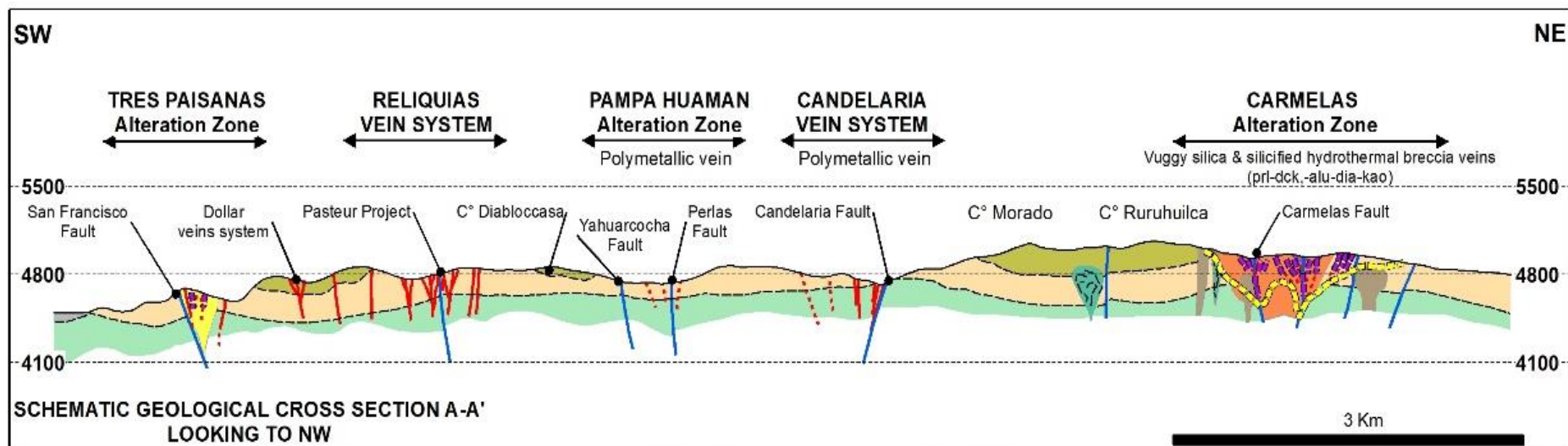
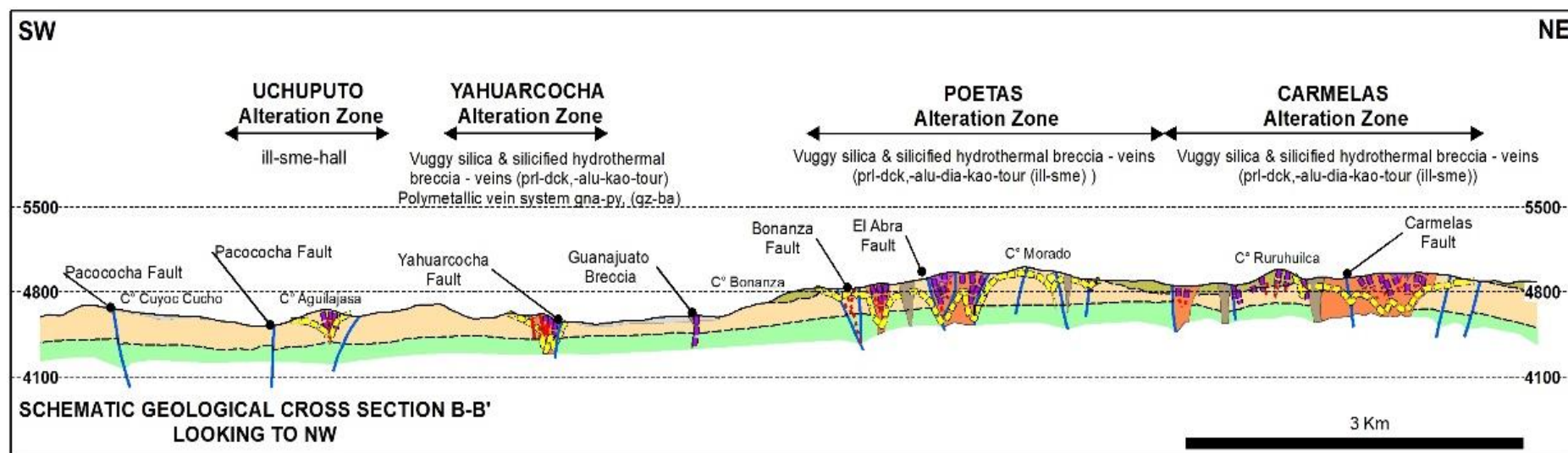
Growing demand for use in photovoltaic solar panels and 5G networks

Growing demand from automotive sector as it electrifies

Demand as a safe haven investment is **rising along with gold**



Brownfields | Scale Up Opportunity

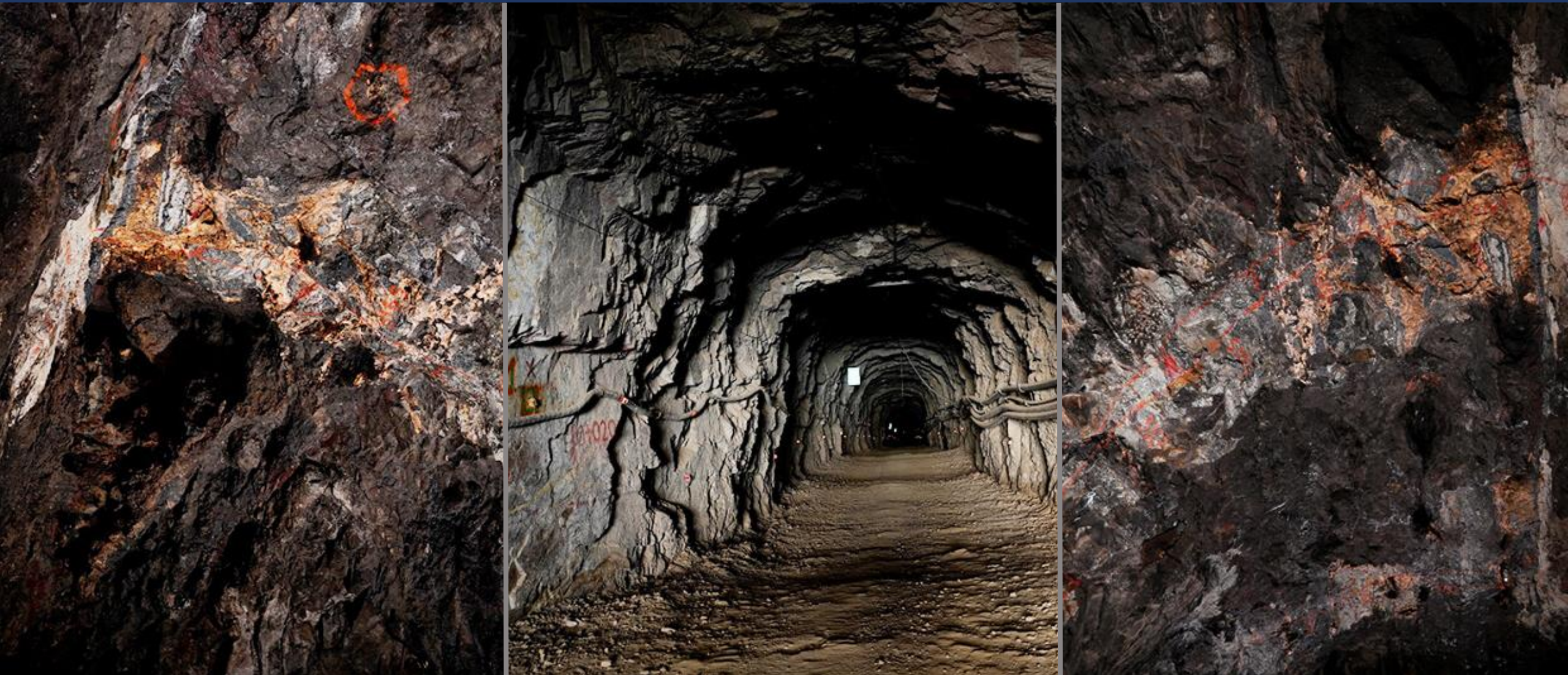


- Dioritic, quartz-diorite, quartz-monzonite intrusives
- Hydrothermal Breccia
- Quartz Dacitic Porphyry (QFP)
- Dacite Porphyry (FQP)
- Latite dome, andesitic porphyritic dome
- UPPER CAUDALOSA FORMATION
Dominant andesite flow lava/flow dome, tuffs
- LOWER CAUDALOSA FORMATION
Dominant tuff /andesite flow lava
- CASTROVIRREYNA FORMATION
Dominant lapillis-crystall tuff / andesite lava
- Advanced argillic
- Silicic structure-feeders (Fe-oxide, py, S, barite)
- Fault
- Polimetallic vein (Ag-Pb-Zn-Cu-Au)
- Inferred vein
- Lake
- Topographic surface
- Elevation in meters above sea level
- Geological contact

Appendix | Reliquias Mine



Appendix | Reliquias Mine (UG View)



Appendix | Dorita & Huancarpusca



Appendix | Concentrator Plant





AgMR

SILVER MOUNTAIN RESOURCES

CORPORATE PRESENTATION

January 2023
www.agmr.ca
TSXV:AGMR
OTCQB:AGMRF
BVL:AGMR